

# Public Health Community Engagement Specialist

at the University of Cincinnati Center for Excellence in Developmental Disabilities (UCCEDD) at Cincinnati Children's Hospital



## REQUIREMENTS

- Bachelor's degree in a related field, such as Public Health, Human Services, Social Work, etc.
- 0-2 years of experience in related job discipline, e.g., Community Health worker
- Knowledge and skills in community outreach and engagement, health messaging, social media, working with underserved communities
- Available for 20 hrs/week, mostly daytime hours (Mon-Fri), with some weekend or evening hours
- Reliable, own transportation

## PREFERRED

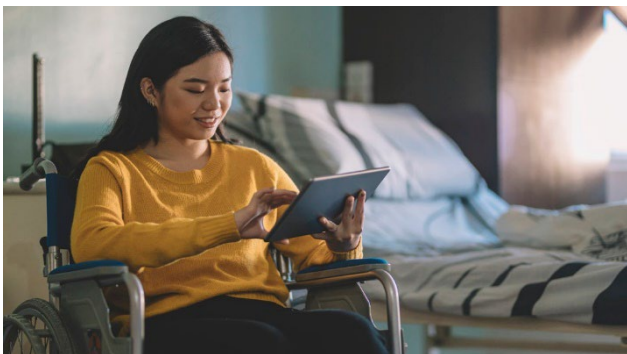
- Knowledge in developmental disabilities and accessible communications
- Bi-lingual English/Spanish
- Photography skills
- In-person/on site availability, at least for some of the work hours

## RESPONSIBILITIES

- Build and maintain relationships with individuals with disabilities and family members in underserved communities and with organizations in those communities
- Develop and disseminate accessible public health and other health materials
- Conduct community outreach activities and attend health fairs, community fairs, etc.
- Track, evaluate, and report outreach activities
- Other tasks as assigned

## SKILLS

- Effective in relationship building/maintaining with human services organizations and in/with underserved communities
- Effective use of communication programs and software, such as Constant Contact, Canva, Photoshop, InDesign, Publisher, etc. to develop public health/outreach materials
- Passion for the work, reliable, self-motivated, independent in their work but also interested in working with others



**QUESTIONS:** Contact Ilka Riddle, PhD at [ilka.riddle@cchmc.org](mailto:ilka.riddle@cchmc.org)

## LEARN MORE ABOUT US:

[www.ucucedd.org](http://www.ucucedd.org)

## HOW TO APPLY:

<https://www.cincinnatichildrens.org/careers>

Requisition #141396

This is a **TEMPORARY** Position (~ July 2023 – September 2024)

Cincinnati Children's is an Equal Opportunity Employer that values Diversity, Equity, and Inclusion. CCHMC is committed to creating an environment of dignity and respect for all employees, patients, and families.

